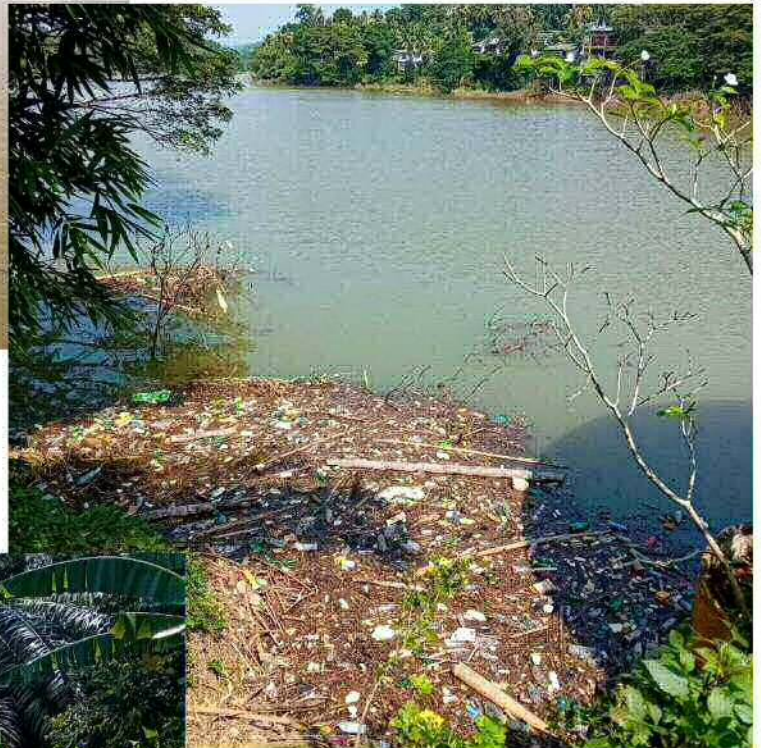


Let's Clean up the Mahaveli River in Kandy, and Let's Keep it Clean!



The Chief Nun of nearby Dhammaviveka Arama is very supportive and has offered washroom facilities and other support. The Arama will serve tea, and Buddhist Relief Mission will provide lunch for all volunteers and workers.

All are invited to join in this event.



Saturday, 1 March 2025

Meeting Place
Lewella Bridge
Sirimalwatta Road, Kandy

Time
9 A.M.

Goal

To create environmental awareness, to practice good citizenship skills, and to support the local community by collecting and removing waste from the Mahaveli River near the Lewella Bridge

Paid workers, wearing life jackets, will push the waste from the center of the river where volunteers can join members of the Social Services Club of Colombo International School, Kandy; Clean Kandy Force; and Dhammaviveka Arama to sort the waste, put it into separate bags, and load it onto trucks provided by Kandy Municipal Council for proper disposal.

For more information,

Telephone and WhatsApp: +94-77-283-4561

Donations are welcome.



https://www.paypal.com/donate/?hosted_button_id=RY5JYPGADLDVN

Donations may also be made

in Sri Lanka via:

Commercial Bank,
Anniwatte Branch
A/C 8254001210
Kenneth Kawasaki

in the U.S. via:

River Bank & Trust
Buddhist Relief Mission
A/C 0290500969
ABA Code: 062206567



Buddhist Relief Mission

www.brelief.org – buddhist@brelief.org

In case of a bank deposit, please send donor's name, the amount, and "Mahaveli Cleanup" by SMS or WhatsApp to +94-77-964-9292 or by email to <buddhist@brelief.org>

Water and Education for Life to Villages and Refugees



After the devastating flood in Myanmar last year, caused by typhoon Yagi, Buddhist Relief Mission made an appeal for emergency food relief and for the installation of a water-purification station in a Shan village. The response was overwhelming. We are pleased to report that the station has been completed and is producing pure and clean drinking water for the villagers. All the equipment is powered by solar panels which produce clean and green electricity. We hope that more such stations can be built, not only in Myanmar, but in poor villages and refugee camps around the world, wherever clean drinking water, so essential for a healthy life, is lacking.



There are more than one million Rohingya refugees from Myanmar in crowded camps in Cox's Bazar, Bangladesh. Recently, Buddhist Relief Mission sent a donation for installing a handpump for water. We also sent funds for food and school supplies for some of the orphan children and to cover the hospital fees for a teacher who was critically ill. We are pleased to learn that the teacher has completely recovered and has returned to the school. This month, we hope to send a donation to help provide children with *Iftar*, food for breaking the fast of Ramadan, which continues until the end of March.

Your donations will help Buddhist Relief Mission to carry out programs such as these, as well as to provide food, medicine, and other essentials to families, students, schools, monasteries, hospitals, and other institutions in Sri Lanka during this economic crisis. Thank you for your generous support!

Sadhu! Sadhu!! Sadhu!!!



https://www.paypal.com/donate/?hosted_button_id=2VNPE5P8FZP58

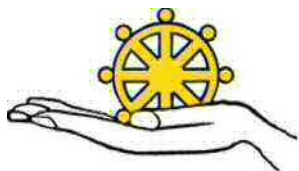
Donations may also be made

in Sri Lanka via:
Commercial Bank,
Anniwatte Branch
A/C 8254001210
Kenneth Kawasaki

in the U.S. via:
River Bank & Trust
Buddhist Relief Mission
A/C 0290500969
ABA Code: 062206567

In case of a bank deposit, please send donor's name and the amount by SMS or WhatsApp to +94-77-964-9292 or by email to buddhist@brelief.org

For international bank transfer, please send a request for instructions.



Buddhist Relief Mission

www.brelief.org – buddhist@brelief.org

Cleaning the Mahaveli River – A Community Initiative - 1



In January 2025, Buddhist Relief Mission invited Prof. David Loy, author of *Ecodharma: Buddhist Teachings for the Ecological Crisis*, to Kandy. After one of his sessions, some of the participants discussed how they could become activists for change. They decided to tackle the problem of pollution clogging the Mahaveli river near the Lewella bridge. On Saturday, March 1, more than 70 people worked together to accomplish this remarkable feat. Here are photos and a description of their marvelous work and the beautiful result.



PARTICIPATING ORGANIZATIONS

- Kandy Municipal Council
- Kandy District Council
- Regional Public Health Inspector
- Mahaveli Authority
- Environmental Police
- Clean Kandy Force
- Green Team
- Colombo International School
- The Wildlife Society of Trinity college
- Buddhist Relief Mission
- Dhammaviveka Arama
- Lewella Community



The volunteers and workers began assembling at the bridge at 9 AM. At first, six paid workers pushed the floating island of pollution debris onto the river bank. While these workers cleared away the bamboo into which the debris had become entangled, creating the ugly island, the volunteers, under the supervision of Clean Kandy Force, the volunteers sorted the waste and collected it in garbage bags, which totaled 196. The Kandy Municipal Council provided a truck, but it had to make two trips to transport all the bags to the Gohagoda Solid Waste Management Centre. As much of the waste as possible is being recycled.



The categories of the waste collected were:

- * Plastic
- * Polythene
- * Rubber, styrofoam, and fabric
- * Glass
- * Metals



The volunteers recorded the brands of much of the plastic waste, so that the manufacturers can be notified. The group intends to launch a campaign to encourage these firms to reduce the production of much of this polluting plastic. Sadly, the debris included many rubber slippers, tyres, and damaged vehicle parts discarded by a nearby three-wheeler shop. The group will report their findings to local shops and try to discourage such wanton pollution. It is also important to educate the public in the proper disposal of plastic products and packaging.




Clean Kandy Force will establish a team to present awareness sessions at community centers and local schools. The team will also set up a monitoring system to control river pollution.



The government authorities have expressed their support and commitment to help in the realization of all of these projects.



 https://www.paypal.com/donate/?hosted_button_id=2VNPE5P8FZP58



Buddhist Relief Mission
www.brelief.org – buddhist@brelief.org



Cleaning the Mahaveli River – A Community Initiative - 2



At 10:30, the group took a break and gathered at Dhammaviveka Arama, a nearby nunnery, for tea and cake. At 12:30, everyone enjoyed plastic-free vegetarian box lunches provided by Buddhist Relief Mission. During these breaks, the volunteers and workers enjoyed sharing their impressions and making future plans. The cleanup was completed at 2:30, but the members of Clean Kandy Force remained at the site until all the debris had been carried away.

Your donations will help Buddhist Relief Mission to carry out programs such as these, as well as to provide food, medicine, and other essentials to families, students, schools, monasteries, hospitals, and other institutions in Sri Lanka during this economic crisis. Thank you for your generous support!

Sadhu! Sadhu!! Sadhu!!!



https://www.paypal.com/donate/?hosted_button_id=2VNPE5P8FZP58
Donations may also be made

in Sri Lanka via:
Commercial Bank,
Anniwatte Branch
A/C 8254001210
Kenneth Kawasaki

In case of a bank deposit,
please send donor's name
and the amount by SMS
or WhatsApp to
+94-77-964-9292 or by
email to
<buddhist@brelief.org>

in the U.S. via:
River Bank & Trust
Buddhist Relief Mission
A/C 0290500969
ABA Code: 062206567

For international bank
transfer, please send a
request for instructions.

**To leave the world better than you found it,
sometimes you have to pick up other people's
trash. – Bill Nyc**



Congratulations and Thanks to All Volunteers and Workers!



Buddhist Relief Mission
www.brelief.org – buddhist@brelief.org

ASSISTING REFUGEES IN NEGOMBO



NAFSO Refugee Care Center



Buddhist Relief Mission
Supporting refugees since 1980



https://www.paypal.com/donate/?hosted_button_id=R73P34KJG5GSL

Donations may also be made



FOOD DRIVE FOR REFUGEES



DURING THIS TIME OF REFLECTION, WE INVITE YOU TO SUPPORT REFUGEES WITH A DONATION THAT CAN MAKE A MEANINGFUL DIFFERENCE IN THEIR LIVES.

Let's come together to support the NAFSO food drive, providing essential aid and comfort to refugee families facing hardship. Every contribution big or small makes a meaningful difference in their lives.

DROP-OFF LOCATION
No.41, Chilaw Rd, Negombo

ITEMS NEEDED

- ▶ KEERI SAMBA
- ▶ 7 STAR ATTA FLOUR
- ▶ VEGETABLE OIL
- ▶ UNDU DHAL
- ▶ DHAL CHANA
- ▶ SUGAR
- ▶ TEA LEAVES
- ▶ SPICES

CASH DONATIONS ARE ALSO ACCEPTED

For More Information :

Programme Officer
+94 770421100 (Ransy)



in Sri Lanka via: Commercial Bank, Anniwatte Branch, A/C 8254001210
in the U.S. via: River Bank & Trust, Buddhist Relief Mission, A/C 0290500969

In case of a bank deposit, please send donor's name, the amount, and "Refugee relief" by SMS or WhatsApp to +94-77-964-9292 or by email to <buddhist@brelief.org>.

For international bank transfer, please send a request for instructions.

For more than five years, National Fisheries Solidarity Organization (NAFSO), has been assisting refugees in Negombo. These asylum seekers are mostly from Palestine, Syria, Pakistan, and Afghanistan. Some of them, however, are Rohingya refugees fleeing from genocide in Myanmar who were picked up by the Sri Lankan Navy. Most of the refugees are Muslim, and they face a great deal of discrimination. It has been very difficult for them to find suitable housing, and, not being legal residents, the children are not allowed to attend public schools. It is also impossible for them to find adequate employment to support themselves.

Last year, UNHCR, began phasing out operations in Sri Lanka, and the withdrawal has left all the refugees without any official support. NAFSO needs help to continue assisting this extremely vulnerable community.

Buddhist Relief Mission joins NAFSO in making an appeal for assistance. In addition to food, as described in the poster on the left, NAFSO is seeking 30 used bicycles. NAFSO also needs two million rupees to enroll 40 students in private schools.

Everything is needed, and any donation, e.g., clothes, school supplies, household items, would be useful.

All donations made here to Buddhist Relief Mission will be receipted and promptly forwarded to NAFSO.



Rohingya refugees demonstrating in Colombo, appealing for assistance after the closure of the UNHCR Office in Sri Lanka.

Massive Earthquakes in Myanmar – Relief Assistance Urgently Needed



Pyaye Phyo / Facebook



The collapsed Maha Myat Muni Pagoda in Mandalay / EPA



Mandalay / Sai Aung Main / AFP via Getty Images



A collapsing Mosque, Mandalay / BNO News)



The collapsed Ava Bridge in Mandalay [EPA]



Naypyitaw / Aung Shine Oo / AP



Naypyitaw / Aung Shine Oo / AP



Naypyitaw / Aung Shine Oo / AP



Naypyitaw / Aung Shine Oo / AP



March 30, 2025

Junta military **continues** to bomb quake-devastated Sagaing, Shan



On March 28, 2025, a massive 7.7 earthquake occurred in Myanmar. The epicenter was in Sagaing, 22 km from Mandalay, the ancient royal capital. There are reports that as much as 80 per cent of that city was severely damaged. Currently the death toll has reached more than 1600, but it is impossible to be sure at this time, because many people are still buried beneath the rubble, and communication with rural areas is very limited. Two days later, an aftershock of 5.1 occurred north of Mandalay, but the damage from that tremor has not yet been reported. This took place, of course, in the midst of the civil war, which has ravaged the country for more than forty years. In spite of the suffering of the citizenry from the devastation from the earthquakes, the military government has not stopped its relentless bombing of villages and towns.

Assistance of all kinds—food, water, medicine, shelter, and more—is urgently needed. Buddhist Relief Mission has a secure route through the Sangha to provide relief directly to the most seriously affected communities without discrimination. Your donations will greatly relieve the suffering of many!

Sadhu! Sadhu!! Sadhu!!!

The Buddha said: “If beings knew, as I know, the results of sharing gifts, they would not enjoy their use without sharing them with others, nor would the taint of stinginess obsess the heart and stay there. Even if it were their last morsel of food, they would not enjoy it, without sharing it, if there were anyone to receive it.” –Itivuttaka 26



https://www.paypal.com/donate/?hosted_button_id=MN34LMD5GYMC4
Donations may also be made by

in Sri Lanka via:
Commercial Bank,
Anniwatte Branch
A/C 8254001210
Kenneth Kawasaki

in the U.S. via:
River Bank & Trust
Buddhist Relief Mission
A/C 0290500969
ABA Code: 062206567

For donation by inter-national bank transfer, please send a request to <buddhist@brelief.org> for instructions.

In case of a bank deposit, please send donor’s name, the amount, and “Myanmar earthquake relief” by SMS or WhatsApp to +94-77-964-9292 or by email to <buddhist@brelief.org>



This video showing novices being rescued can be viewed with a Facebook account.
WARNING The video contains graphic images of seriously injured individuals. It may be upsetting. Please use discretion in viewing.



Mandalay / EPA-EFE



Click this photo to watch a video of relief being distributed to earthquake victims



Masoyein Monastery after collapsing / Facebook / Westernnews

Click the image below to watch a graphic video of Masoyein Monastery collapsing



Buddhist Relief Mission
www.brelief.org – buddhist@brelief.org

Relief Aid to Victims of the Massive Earthquake in Myanmar



The death toll from the magnitude 7.7 earthquake in Myanmar on March 28 has exceeded 3600. More than 5300 religious buildings were damaged, and many were completely destroyed. The most extensive damage took place in Mandalay, the ancient royal capital. There was destruction on every street, and one report estimates that 80% of the city was damaged.

The outpouring of compassion and love for the Myanmar (Burmese) people is tremendous. The response from the international community and religious institutions in Sri Lanka has been overwhelming. Buddhist Relief Mission has channeled the donations we have received—more than US\$10,000—through Sangha Karuna Association, organized by the Burmese monks and nuns studying in Sri Lanka. Their funds have been used to purchase medical supplies, to provide treatment for injured victims, to distribute safe drinking water and food and to repair or reconstruct damaged buildings, including monasteries, nunneries, mosques, and Hindu temples.



It is estimated that, throughout the country three and a half million people were affected by the earthquake. The needs remain great, and recovery will take a long time. Buddhist Relief Mission intends to continue supporting the relief efforts. We extend the greatest gratitude to our many donors.

Sadhu! Sadhu!! Sadhu!!!

In spite of the immense suffering caused by the earthquake, the military government has shown no mercy, and has continued its relentless oppression of villagers and ethnic minorities. Just since the earthquake, the government has carried out nine bombing attacks in Mandalay District alone.



Your donations will allow Buddhist Relief Mission to continue providing much-needed assistance to victims of the earthquake and for reconstruction and recovery.



https://www.paypal.com/donate/?hosted_button_id=MN34LMD5GYMC4
Donations may also be made by

in Sri Lanka via:
Commercial Bank,
Anniwatte Branch
A/C 8254001210
Kenneth Kawasaki

in the U.S. via:
River Bank & Trust
Buddhist Relief Mission
A/C 0290500969
ABA Code: 062206567



In case of a bank deposit, please send donor's name, the amount, and "Myanmar earthquake relief" by SMS or WhatsApp to +94-77-964-9292 or by email to <buddhist@brelief.org>

For donation by international bank transfer, please send a request to <buddhist@brelief.org> for instructions.



This 33-second video (available via Facebook), showing the damage to a mosque and a donation for the reconstruction, has a soundtrack of Burmese music.



Buddhist Relief Mission
www.brelief.org – buddhist@brelief.org